

MagLock

Lift Car Gate Locking System.
Surface Mounted.

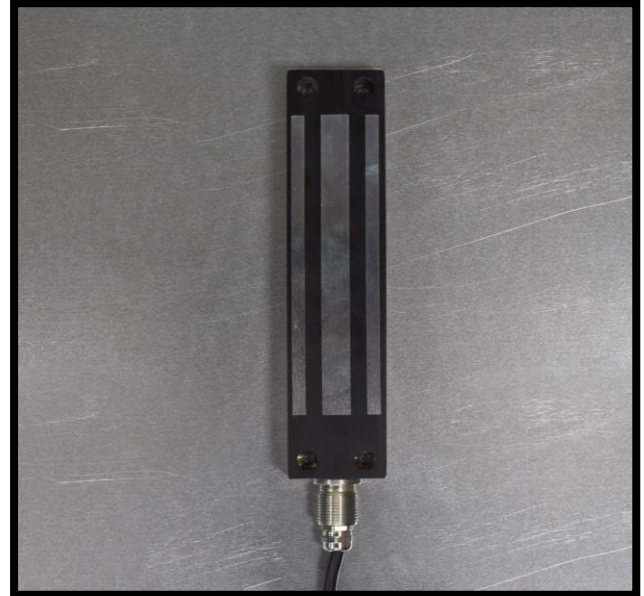
Our MagLock System has been designed to replace Matthew Catches to prevent any unwanted car door movement in mid travel.



MagLock Installation Manual.



Firstly, determine the best position for the installation of the MagLock between the car door and lift car wall.



Position the surface mounted MagLock in the vertical position on the side of the lift car wall as shown.

MagLock Installation Manual.



Position the Lock plate to the leading edge of the car shutter gate



The position should be in line with the MagLock. Fix the Locking plate to the leading edge. 10mm packer provided if needed. **Use Lock Thread on all fixings.**



NOTE – Ensure the Magnet is towards the edge with the wiring

When installation is complete, please make sure the lift car door and tracks are clear and work correctly. The MagLock **MUST** be no more than **3mm** from the Lock Plate When the door is closed.

Please ensure that you inform ALL operatives to close the lift car door slowly at all times ensuring that the car door is fully closed so the Maglock can works correctly. !!!!

MagLock Interface Installation Manual.

IMPORTANT: This unit must be installed by a competent person only.

Warning: Isolate Supply Before Opening Cover

Safety Warning

These warnings are provided in the interest of safety. You must read them carefully before or using this equipment

- All installation and servicing must be done by a qualified competent person.
- It is dangerous to alter specification or modify the product in any way.
- Ensure that these instructions are passed on to the end user and lift control drawings are modified as necessary.
- Do not attach to any surface which is freshly painted, damp, or otherwise electrically conductive.

ATTENTION: Fit the correct relay according to the ramp voltage.

110VDC Ramp Supply Fit Relay 110VDC Only
220VDC Ramp Supply Fit Relay 220VDC Only

MagLock Interface Installation Manual.

Before you commence your installation, please make sure the correct relay has been fitted and the trip switch within the control unit is off!!!!!!

Firstly, find a suitable position to install the interface unit on top of the lift car top.

Connect the 12VDC **MagLock** Lead – **W2** to the MagLock.

Cable Number (1) 12VDC + - MagLock Red/Yellow Together.

Cable Number (2) 12VDC _ - MagLock Black/Green Together.

Optional: Connect in Series with Car Gate Contact S1 and S2 within the control unit box. Cable Number (3) – NO – MagLock Green Cable, Cable Number (4) – COM – MagLock White Cable to give controller feedback when the car gate is shut and the Maglock is activated.

Connect the **Ramp** signal lead – **W3** to the existing Retiring Cam Unit. **Please make sure you connect the lead to the correct polarity**

Connect the power lead to **230VAC – W1**

How to test the Maglock.

Switch on the Interface unit via the trip switch.

Make sure the car door is full closed.

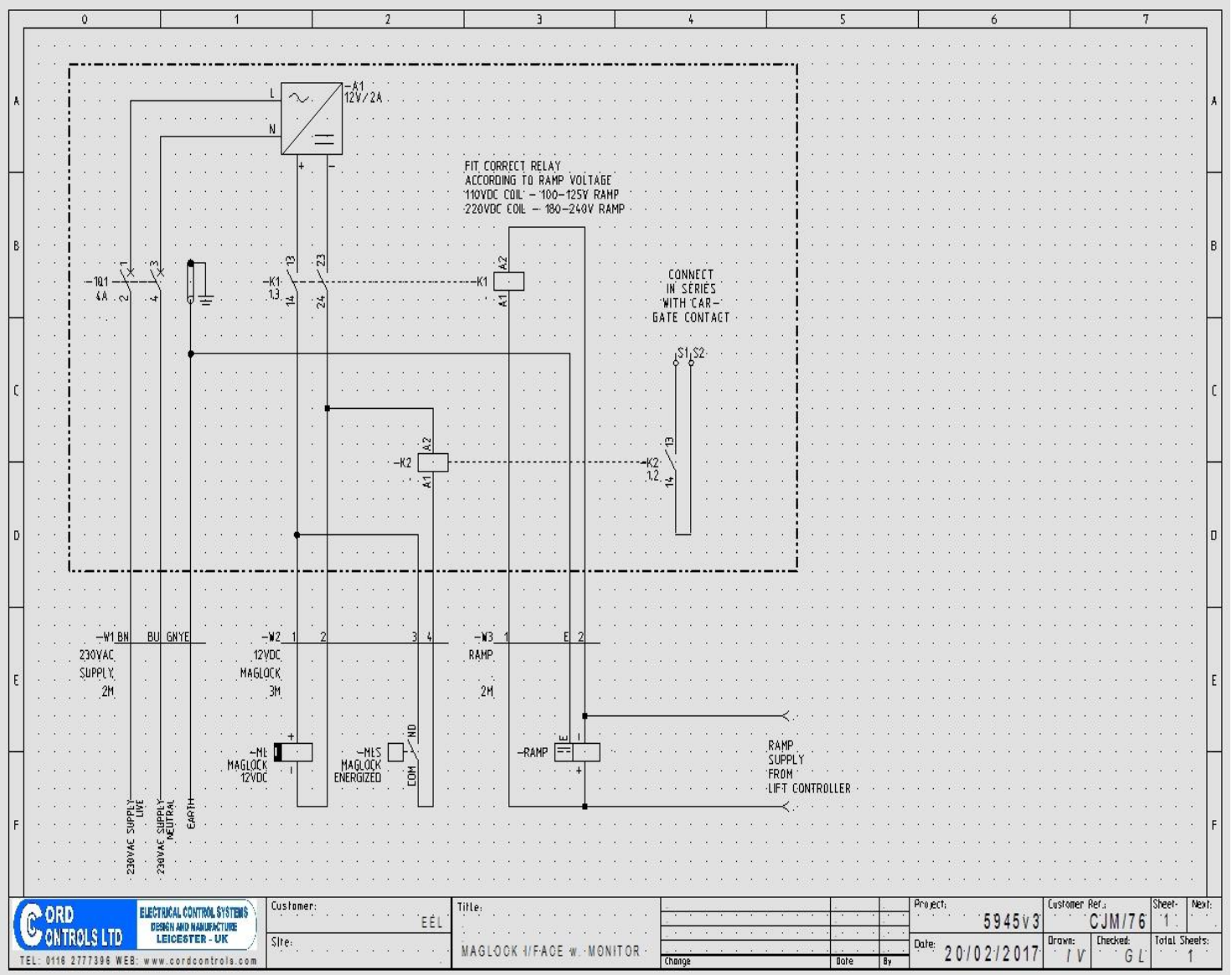
Press and hold the green button on the relay.

The car door will now be locked.

Now put the lift back into service and check to see if the car door is locked during travel and unlocks when the lifts at floor level.

If the car door opens in travel, check your wiring to the Ramp that the polarity is connected correctly.

MagLock Interface Installation Manual.



CARD CONTROLS LTD
ELECTRICAL CONTROL SYSTEMS
DESIGN AND MANUFACTURE
LEICESTER - UK
TEL: 0116 2777396 WEB: www.cardcontrols.com

Customer:	EEL
Site:	
Title:	MAGLOCK I/FACE w. MONITOR

Project:	5945v3	Customer Ref.:	CJM/76	Sheet:	1	Next:	
Date:	20/02/2017	Drawn:	IV	Checked:	GL	Total Sheets:	1
Change		Date		By			

